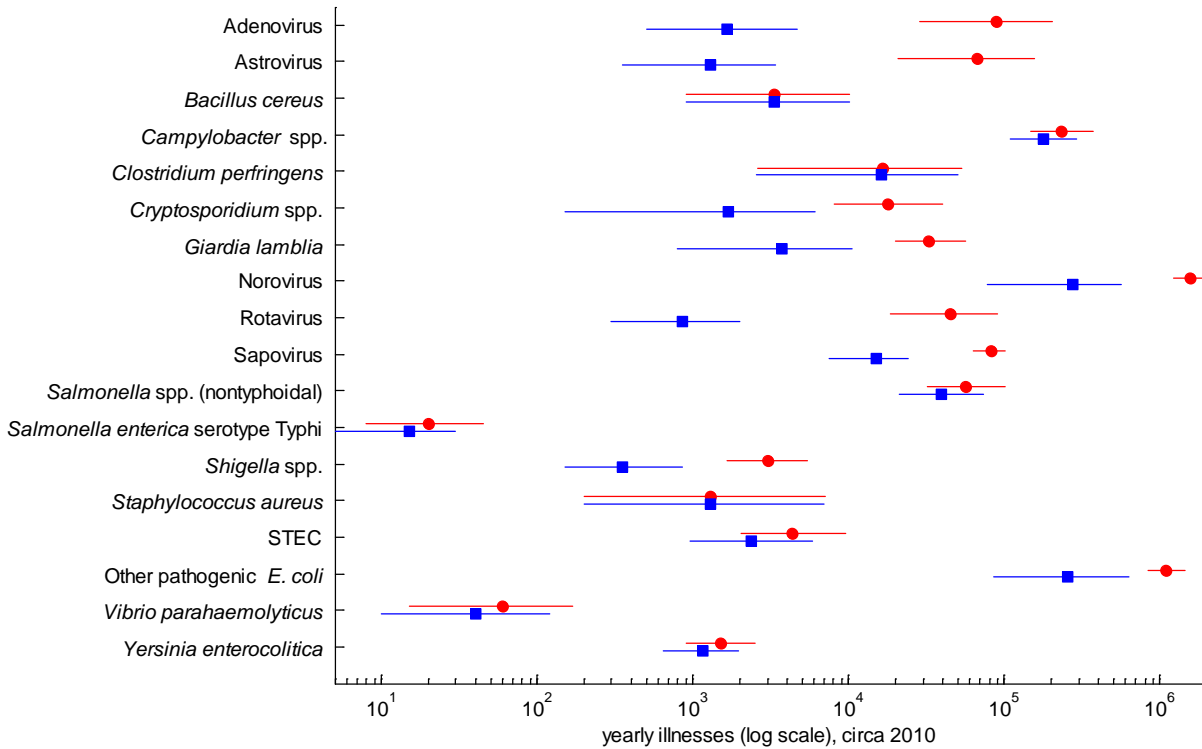


Foodborne Illness, Australia, Circa 2000 and Circa 2010

Technical Appendix 5



Technical Appendix 5 Figure. Median number of all domestically acquired illnesses (red dots) and domestically acquired foodborne illnesses (blue squares), by pathogen, Australia, circa 2010. Bars indicate 90% credible intervals. *E. coli*, *Escherichia coli*; STEC, Shiga toxin-producing *E. coli*. *Salmonella* spp. (nontyphoidal) refers to nontyphoidal *Salmonella enterica* serotypes.