

Ehrlichia chaffeensis Infection of Sika Deer, Japan

Makoto Kawahara, Tomoko Tajima, Harumi Torii,
Mitsutaka Yabutani, Joji Ishii, Makiko Harasawa,
Emiko Isogai, and Yasuko Rikihisa

To determine whether *Ehrlichia chaffeensis* exists in Japan, we used PCR to examine blood from sika deer in Nara, Japan. Of 117 deer, 36 (31%) were infected with *E. chaffeensis*. The *E. chaffeensis* 16S rRNA base and GroEL amino acid sequences from Japan were most closely related to those of *E. chaffeensis* Arkansas.

Human infection with *Ehrlichia chaffeensis* causes human monocytic ehrlichiosis (HME), an influenza-like illness. Severity of the disease varies from mild to severe and can even cause death (1). HME cases have been reported primarily in the southeastern and south-central regions of the United States (1).

The organism, *E. chaffeensis*, until recently has been reported only in the United States; however, numerous reports now indicate that *Ehrlichiae* spp. closely related or identical to *E. chaffeensis* exist throughout the world (1,2). In the United States, *E. chaffeensis* has been most frequently identified in the lone star tick (*Amblyomma americanum*) (3). *E. chaffeensis* DNA has also been detected in *A. testudinarium* and *Haemaphysalis yeni* ticks from southern People's Republic of China (4), in *H. longicornis* ticks from South Korea (5), and in *A. parvum* ticks in Argentina (6). Other than *A. americanum*, the role of these tick species as *E. chaffeensis* vectors has not been investigated. The white-tailed deer (*Odocoileus virginianus*) is the only vertebrate species currently recognized as a complete and sufficient host for maintaining the transmission cycle of *E. chaffeensis* (3,7). To look for molecular evidence of *E. chaffeensis* in sika deer (*Cervus nippon*) in Japan, we examined blood specimens by using PCR amplification of the 16S rRNA and *groEL* genes.

Author affiliations: Nagoya City Public Health Research Institute, Nagoya, Japan (M. Kawahara, M. Yabutani, J. Ishii); Osaka Prefecture University, Sakai, Japan (T. Tajima); Nara University of Education, Nara, Japan (H. Torii); Kyoto University, Kyoto, Japan (M. Harasawa); Health Sciences University of Hokkaido, Tobetsu, Japan (E. Isogai); and The Ohio State University, Columbus, Ohio, USA (Y. Rikihisa)

DOI: 10.3201/eid1512.081667

The Study

In Nara, Japan, to prevent injuries to park visitors, the Foundation for the Protection of Sika Deer in Nara Park captured 97 pregnant female sika deer in April 2005 and 20 male sika deer with antlers in November 2005. Blood specimens were collected from all 117 deer, and buffy coat fractions were stored at -80°C for further analysis. Genomic DNA was extracted from the buffy coat fractions by using a QIAamp tissue kit (QIAGEN, Valencia, CA, USA). Nested PCR amplification of genomic DNA was performed by using primer pairs designed to amplify the *E. chaffeensis* 16S ribosomal RNA (rRNA) gene and the *E. chaffeensis* *groEL* gene (Table).

Of the 117 specimens, 36 (31%) yielded *E. chaffeensis* 16S rRNA amplification products and 35 (30%) yielded *E. chaffeensis* *groEL* amplification products. Of 36 16S rRNA-positive specimens, 33 were positive for *groEL* (92% concordance rate). Of 35 *groEL*-positive specimens, 33 were positive for 16S rRNA (94% concordance rate). The *E. chaffeensis* sequences were conserved in that all sequences obtained from sika deer in Nara were nearly identical to those of a representative strain that we named NS101 and submitted to GenBank (accession no. AB454074). The sequence of the 16S rRNA gene from *E. chaffeensis* NS101 was most closely related (99.6% identity; 5 bases of 1,333 bp that can be aligned for comparison differed) to that of 5 human isolates: Arkansas (GenBank accession no. M73222) (8), Sapulpa (U60476) (9), 91HE17 (U23503) (10), St. Vincent (U86665) (11), and Jax (U86664) (11); the next closest sequence was from an *E. chaffeensis* isolate from *A. testudinarium* ticks in China (GenBank accession no. AF147752) (99.2% identity; 10 bases of 1,333 bp that can be aligned for comparison differed).

When *E. chaffeensis* NS101 was compared with *Ehrlichia* spp. previously identified in Japan, the sequence of the 16S rRNA gene (a 1,328-bp segment that can be aligned for comparison) of *E. chaffeensis* NS101 was 98.9%, 98.9%, and 98.6% identical to that of *E. muris* AS145 strain, *Ehrlichia* sp. HF565 (the HF strain, *Ixodes ovatus* Ehrlichia) and *Candidatus* Ehrlichia shimanensis TS37, respectively. Phylogenetic analysis concurred with the observation that *E. chaffeensis* from Nara sika deer has the highest identity to the *E. chaffeensis* human isolates from the United States (Figure 1).

Although longer 16S rRNA gene sequences are desirable for strain comparison, the sequence of the 16S rRNA gene of *E. chaffeensis* from *H. longicornis* ticks in Korea (GenBank accession no. AY350424, 390 bp) and from *A. parvum* ticks in Argentina (GenBank accession no. EU826516, 470 bp) were identical to a corresponding, but incomplete, segment (358 bp and 402 bp, respectively) of the 16S rRNA gene of *E. chaffeensis* NS101 and Arkansas strains. An *Ehrlichia* sp. was detected in blood samples

Table. Detection of 16S rRNA gene and *groEL* gene of *Ehrlichia chaffeensis* in sika deer, Japan

Target gene	1st PCR or nested PCR	Primer ID	Product size, bp	Sequence of primers (5' → 3')	No. positive
16S rRNA	1st	NS16SCH1F	1195	ACGGACAATTGCTTATAGCCTT	7
		NS16SCH1R		ACAACTTTTATGGATTAGCTAAAT	
	Nested	NS16SCH2F NS16SCH2R	443	GGGCACGTAGGTGGACTAG CCTGTTAGGAGGGATACGAC	36
<i>groEL</i> gene	1st	NSgroCH1F NSgroCH1R	849	GTTGTAAGTGGTGAACAACCTC CTTTTCTTCTATCACCAAACCC	4
	Nested	NSgroCH2F	469	GTTTCGTATTTTGAAGATGCTG	35
		NSgroCH2R		ACTGTGATAACTCCATCCTTAC	

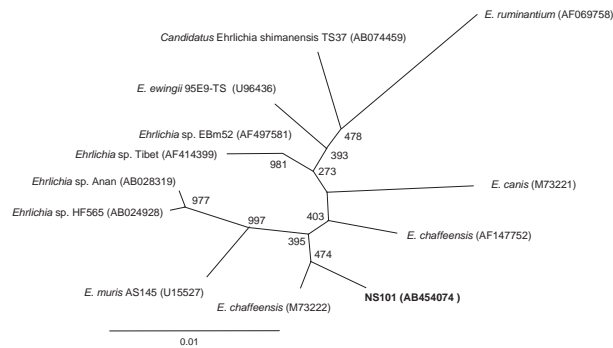


Figure 1. Phylogenetic relationship between *Ehrlichia chaffeensis* NS101 (in **boldface**) and other *Ehrlichia* spp. 16S rRNA gene sequences. GenBank accession numbers are shown in parentheses. Numbers above internal nodes indicate the number of bootstrap replicates of 1,000 that supported the branch. Scale bar indicates percent sequence divergence.

from marsh deer (*Blastocerus dichotomus*) captured near the Parana River in southeast Brazil in 1998 (12). However, the 16S rRNA sequence from these marsh deer (GenBank accession no. DQ345720, 383 bp) shares 98.7% identity to a corresponding, but incomplete, segment (381 bp) of the *E. chaffeensis* NS101 and Arkansas strains. Because the sequences of the corresponding segments of *Ehrlichia* sp. HF565 and ‘*Candidatus Ehrlichia shimanensis*’ TS37 both had 99.0% identity to that of *E. chaffeensis* Arkansas strain, higher than the 98.7%, the *Ehrlichia* sp. in marsh deer from Brazil might not be *E. chaffeensis*.

Among the *E. chaffeensis groEL* sequences available in current databases, only that from *E. chaffeensis* Arkansas has >1,000 bp for reliable comparison. The *groEL* DNA sequence (1,208 bp that can be aligned) of the NS101 strain (GenBank accession no. AB454077, 1,311 bp) was most closely related to that of *E. chaffeensis* Arkansas (GenBank accession no. L10917), followed by the *Ehrlichia* sp. HF565 strain (GenBank accession no. AB032712), and the *E. muris* AS145 strain (GenBank accession no. AF210459) (Figure 2). The deduced *E. chaffeensis* NS101 *groEL* amino acid sequence (402 residues) was most closely related (99.5% identity) to that of *E. chaffeensis* Arkansas, followed by the *Ehrlichia* sp. HF565 strain (99.2% identity) and *E. muris* AS145 strain (99.0%).

Conclusions

On the basis of the long 16S rRNA and the *groEL* DNA sequences, our study demonstrates the presence of *E. chaffeensis* in sika deer from Nara, Japan. The genetic similarity of *E. chaffeensis* in the sika deer in Japan to strains isolated from HME patients in the United States raises the possibility that HME may exist in Japan. Of 1,803 serum samples collected from persons in metropolitan Tokyo from 1991 through 1995, when *E. muris* was used as antigen, 20 were seropositive (13). Because *E. chaffeensis* and *E. muris* antigens are highly cross-reactive (14), some of these persons might have been infected with *E. chaffeensis*. Of the 10 tick species found on sika deer (15), the primary tick species found on sika deer in Nara is *H. longicornis*, which is known to bite humans in Japan and to be infected with *E. chaffeensis* in South Korea (5). Because sika deer are abundant and increasing throughout Japan (16), this finding highlights need to survey sika deer and humans in Japan for *E. chaffeensis* infection.

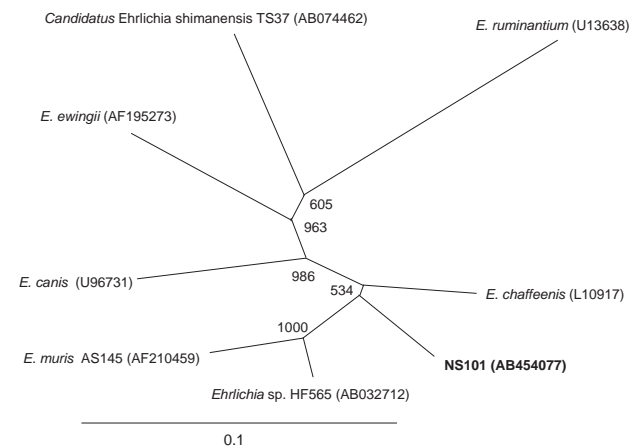


Figure 2. Phylogenetic relationship between the *Ehrlichia chaffeensis* NS101 *groEL* sequence (1,208 bp) (in **boldface**) and other *Ehrlichia* spp. *groEL* sequences. GenBank accession numbers are shown in parentheses. Numbers above internal nodes indicate the number of bootstrap replicates of 1,000 that supported the branch. Scale bar indicates percent sequence divergence.

Acknowledgments

This work is dedicated to the late Masayoshi Tsuji; without his cooperation, this work would not have been possible. We are grateful to the Foundation for the Protection of Sika Deer in Nara Park for collection of blood samples.

Dr Kawahara is a researcher at the Nagoya City Public Health Research Institute. His research focuses on the *Ehrlichia* and *Anaplasma* species in Japan. He discovered *Ehrlichia muris* and *Candidatus Neoehrlichia mikurensis* and characterized the HF strain and *Mycoplasma haemomuris*.

References

1. Paddock CD, Childs JE. *Ehrlichia chaffeensis*: a prototypical emerging pathogen. *Clin Microbiol Rev*. 2003;16:37–64. DOI: 10.1128/CMR.16.1.37-64.2003
2. Martinez MC, Gutierrez CN, Monger F, Ruiz J, Watts A, Mijares VM, et al. *Ehrlichia chaffeensis* in child, Venezuela. *Emerg Infect Dis*. 2008;14:519–20. DOI: 10.3201/eid1403.061304
3. Paddock CD, Yabsley MJ. Ecological havoc, the rise of white-tailed deer, and the emergence of *Amblyomma americanum*—associated zoonoses in the United States. *Curr Top Microbiol Immunol*. 2007;315:289–324. DOI: 10.1007/978-3-540-70962-6_12
4. Cao WC, Gao YM, Zhang PH, Zhang XT, Dai QH, Dumler JS, et al. Identification of *Ehrlichia chaffeensis* by nested PCR in ticks from southern China. *J Clin Microbiol*. 2000;38:2778–80.
5. Kim CM, Kim MS, Park MS, Park JH, Chae JS. Identification of *Ehrlichia chaffeensis*, *Anaplasma phagocytophilum*, and *A. bovis* in *Haemaphysalis longicornis* and *Ixodes persulcatus* ticks from Korea. *Vector Borne Zoonotic Dis*. 2003;3:17–26. DOI: 10.1089/153036603765627424
6. Tomassone L, Nunez P, Gurtler RE, Ceballos LA, Orozco MM, Kitron UD, et al. Molecular detection of *Ehrlichia chaffeensis* in *Amblyomma parvum* ticks, Argentina. *Emerg Infect Dis*. 2008;14:1953–5. DOI: 10.3201/eid1412.080781
7. Ewing SA, Dawson JE, Kocan AA, Barker RW, Warner CK, Panciera RJ, et al. Experimental transmission of *Ehrlichia chaffeensis* (Rickettsiales: Ehrlichieae) among white-tailed deer by *Amblyomma americanum* (Acari: Ixodidae). *J Med Entomol*. 1995;32:368–74.
8. Dawson JE, Anderson BE, Fishbein DB, Sanchez JL, Goldsmith CS, Wilson KH, et al. Isolation and characterization of an *Ehrlichia* sp. from a patient diagnosed with human ehrlichiosis. *J Clin Microbiol*. 1991;29:2741–5.
9. Chen SM, Yu XJ, Popov VL, Westerman EL, Hamilton FG, Walker DH. Genetic and antigenic diversity of *Ehrlichia chaffeensis*: comparative analysis of a novel human strain from Oklahoma and previously isolated strains. *J Infect Dis*. 1997;175:856–63. DOI: 10.1086/513982
10. Dumler JS, Chen SM, Asanovich K, Trigiani E, Popov VL, Walker DH. Isolation and characterization of a new strain of *Ehrlichia chaffeensis* from a patient with nearly fatal monocytic ehrlichiosis. *J Clin Microbiol*. 1995;33:1704–11.
11. Paddock CD, Sumner JW, Shore GM, Bartley DC, Elie RC, McQuade JG, et al. Isolation and characterization of *Ehrlichia chaffeensis* strains from patients with fatal ehrlichiosis. *J Clin Microbiol*. 1997;35:2496–502.
12. Machado RZ, Duarte JM, Dagnone AS, Szabo MP. Detection of *Ehrlichia chaffeensis* in Brazilian marsh deer (*Blastocerus dichotomus*). *Vet Parasitol*. 2006;139:262–6. DOI: 10.1016/j.vetpar.2006.02.038
13. Kawahara M, Ito T, Suto C, Shibata S, Rikihisa Y, Hata K, et al. Comparison of *Ehrlichia muris* strains isolated from wild mice and ticks and serologic survey of humans and animals with *E. muris* as antigen. *J Clin Microbiol*. 1999;37:1123–9.
14. Wen B, Rikihisa Y, Mott J, Fuerst PA, Kawahara M, Suto C. *Ehrlichia muris* sp. nov., identified on the basis of 16S rRNA base sequences and serological, morphological, and biological characteristics. *Int J Syst Bacteriol*. 1995;45:250–4.
15. Inokuma H, Fujimoto T, Hosoi E, Tanaka S, Fujisaki K, Okuda M, et al. Tick infestation of sika deer (*Cervus nippon*) in the western part of Yamaguchi Prefecture, Japan. *J Vet Med Sci*. 2002;64:615–7. DOI: 10.1292/jvms.64.615
16. Tokida K. Urgent symposium: amendment of the wildlife protection and hunting law and its problems. Sika deer management in Japan: from the viewpoint of art [in Japanese]. *Honyurui Kagaku (Mammalian Science)* 2003;Supplement Vol. 3:21–24.

Address for correspondence: Yasuko Rikihisa, The Ohio State University, Department of Veterinary Biosciences, 305 Goss Laboratory, 1925 Coffey Rd, Columbus, OH 43210, USA; email: rikihisa.1@osu.edu

Get the content you want delivered to your inbox.

Sign up to receive emailed announcements when new podcasts or articles on topics you select are posted on our website.

www.cdc.gov/ncidod/eid/subscribe.htm

Table of contents
Podcasts
Ahead of Print
CME
Specialized topics

