

# Novel *Chlamydiaceae* Disease in Captive Salamanders

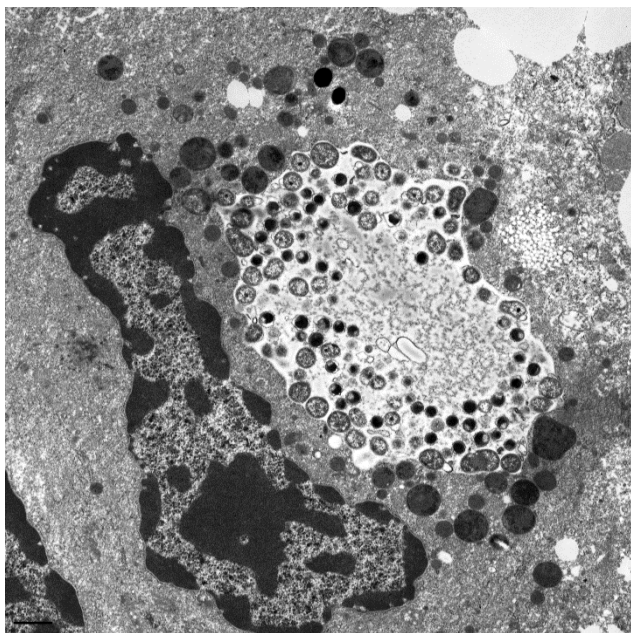
## Technical Appendix

### Description of *Candidatus Amphibiichlamydia salamandrae*

*Candidatus Amphibiichlamydia salamandrae* [Amphibii chlamydia N.L. n. Amphibia name of host class; L. fem. n. *Chlamydia* name of bacterial taxon; N.L. fem. n.

*Amphibiichlamydia Chlamydia* from an amphibian; salamandra'e. L. gen. n. salamandrae of a salamander]

The provisional taxon “*Candidatus Amphibiichlamydia salamandrae*” contains intracellular bacteria that infect salamanders of the genera *Neurergus* and *Salamandra* in freshwater or terrestrial environments. The 16S rRNA gene of *Candidatus Amphibiichlamydia salamandrae* has been deposited in the GenBank under accession nos. JN392920 and JN392919. The 16S rRNA gene shows phylogenetic affinity toward the family *Chlamydiaceae*.



Technical Appendix Figure. Transmission electron micrograph of a liver section of a yellow spotted newt (*Neurergus crocatus*) showing an intracellular vacuole containing elementary bodies and reticulate bodies of *Chlamydia*-like organisms. Original magnification  $\times 4,000$ .