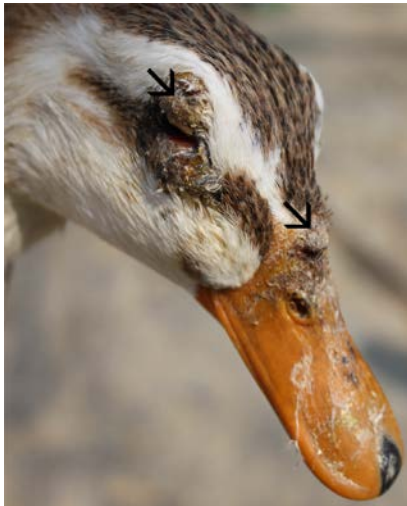
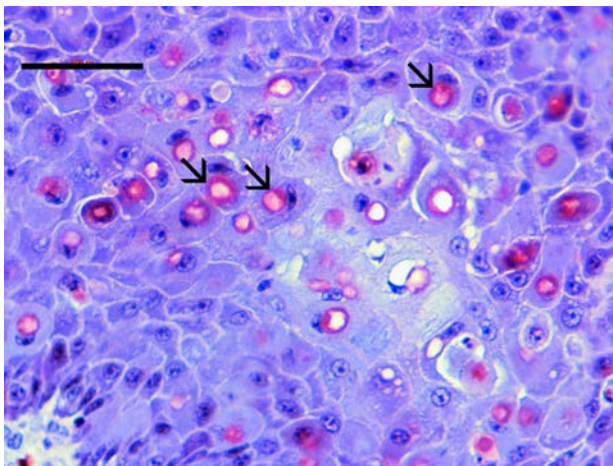


Outbreak-associated Novel Avipoxvirus in Domestic Mallard Duck, China

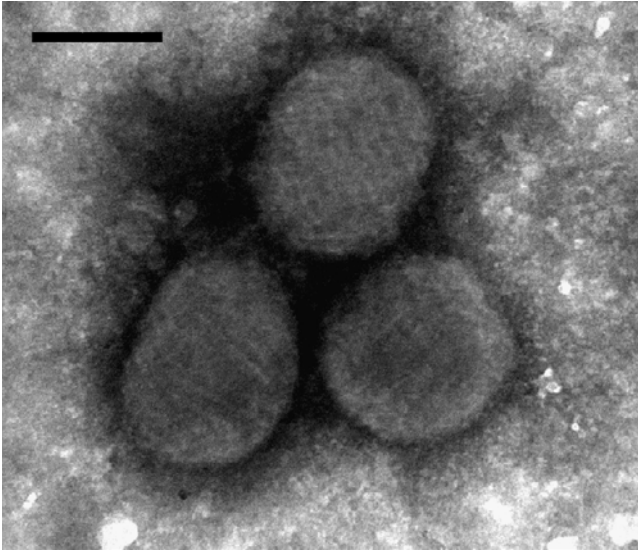
Technical Appendix



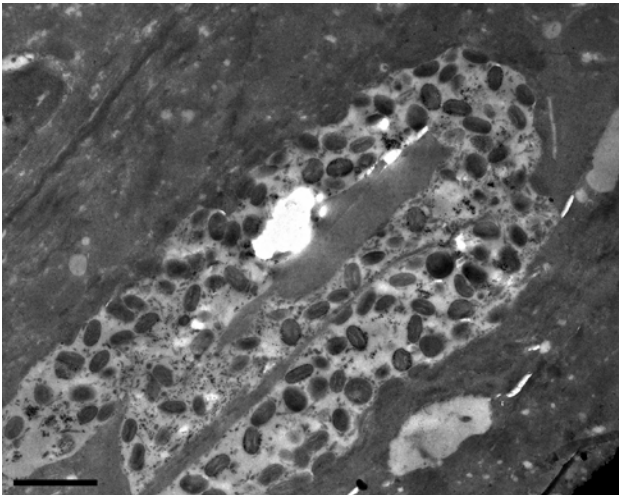
Technical Appendix Figure 1. Cutaneous nodules on the eyelid (arrow) and beak (arrow) of a novel avipoxvirus-affected female mallard duck, China



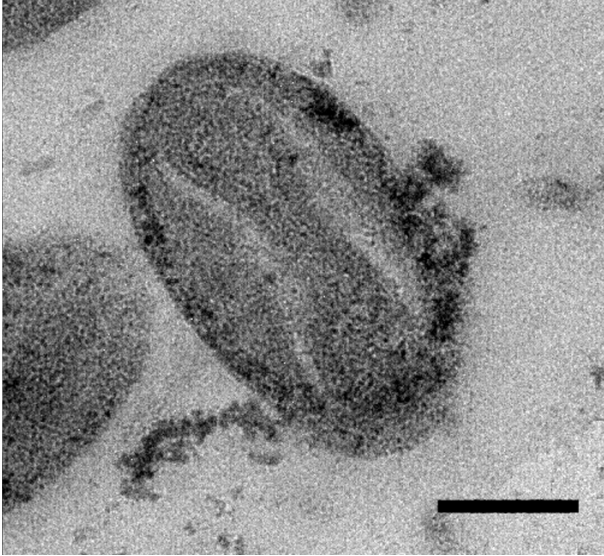
Technical Appendix Figure 2. Histologically, proliferation of swollen keratinocytes was observed in the epidermis. Degenerated cells included eosinophilic ring-shaped cytoplasmic inclusions (arrow), Bollinger bodies. Original magnification $\times 40$, hematoxylin and eosin stain. Scale bar = 125 μm .



Technical Appendix Figure 3. Brick-shaped, 330 × 280 × 200-nm virus particles with irregular pipes-shaped surface structures. Original magnification ×100,000. Scale bar = 200 nm.



Technical Appendix Figure 4. Ultrastructurally, cytoplasm within degenerating epithelium contained inclusions that consisted of viral particles. Original magnification ×40,000. Scale bar = 1,000 nm.



Technical Appendix Figure 5. Virus particle consists of a dumbbell-shaped central core, lateral bodies, and a convoluted outer membrane. Original magnification $\times 200,000$. Scale bar = 100 nm.