

Rickettsial Illnesses as Important Causes of Febrile Illness in Chittagong, Bangladesh

Hugh W. Kingston, Mosharraf Hossain, Stije Leopold, Tippawan Anantatat, Ampai Tanganuchitcharnchai, Ipsita Sinha, Katherine Plewes, Richard J. Maude, M.A. Hassan Chowdhury, Sujat Paul, Rabiul Alam Mohammed Erfan Uddin, Mohammed Abu Naser Siddiqui, Abu Shahed Zahed, Abdullah Abu Sayeed, Mohammed Habibur Rahman, Anupam Barua, Mohammed Jasim Uddin, Mohammed Abdus Sattar, Arjen M. Dondorp, Stuart D. Blacksell, Nicholas P.J. Day, Aniruddha Ghose, Amir Hossain, Daniel H. Paris

Medscape **ACTIVITY** EDUCATION



JOINTLY ACCREDITED PROVIDER
INTERPROFESSIONAL CONTINUING EDUCATION

In support of improving patient care, this activity has been planned and implemented by Medscape, LLC and Emerging Infectious Diseases. Medscape, LLC is jointly accredited by the Accreditation Council for Continuing Medical Education (ACCME), the Accreditation Council for Pharmacy Education (ACPE), and the American Nurses Credentialing Center (ANCC), to provide continuing education for the healthcare team.

Medscape, LLC designates this Journal-based CME activity for a maximum of 1.00 **AMA PRA Category 1 Credit(s)**[™].

Physicians should claim only the credit commensurate with the extent of their participation in the activity.

All other clinicians completing this activity will be issued a certificate of participation. To participate in this journal CME activity: (1) review the learning objectives and author disclosures; (2) study the education content; (3) take the post-test with a 75% minimum passing score and complete the evaluation at <http://www.medscape.org/journal/eid>; and (4) view/print certificate. For CME questions, see page 818.

Release date: March 16, 2018; Expiration date: March 16, 2019

Learning Objectives

Upon completion of this activity, participants will be able to:

- Distinguish common symptoms of rickettsial illness
- Evaluate the epidemiology of rickettsial illness in the current study
- Assess high-risk months for infection with scrub typhus in the current study
- Analyze the genotypes of *Orientia tsutsugamushi* isolated in the current study.

CME Editor

Jude Rutledge, BA, Technical Writer/Editor, Emerging Infectious Diseases. *Disclosure: Jude Rutledge has disclosed no relevant financial relationships.*

CME Author

Charles P. Vega, MD, FAAFP, Health Sciences Clinical Professor, University of California, Irvine, Department of Family Medicine; Associate Dean for Diversity and Inclusion, University of California, Irvine, School of Medicine; Executive Director, University of California, Irvine, Program in Medical Education for the Latino Community, Irvine, California. *Disclosure: Charles P. Vega, MD, FAAFP, has disclosed the following relevant financial relationships: served as an advisor or consultant for Johnson & Johnson Healthcare; served as a speaker or a member of a speakers bureau for Shire Pharmaceuticals.*

Authors

Disclosures: Hugh W. Kingston, BMBCh, PhD; Mosharraf Hossain, MBBS; Stije Leopold, MD; Tippawan Anantatat, MSc; Ampai Tanganuchitcharnchai, MSc; Ipsita Sinha, MBBS, MSc; Katherine Plewes, MD, DPhil; Richard J. Maude, MD, DPhil; M.A. Hassan Chowdhury, FCPS, FRCP, FACP, MD; Sujat Paul, FCPS, MBBS, MPhil; Rabiul Alam Md Erfan Uddin, MBBS, MCPS, FCPS; Md Abu Naser Siddiqui, MBBS, FCPS, MD; Abu Shahed Md Zahed, MBBS, FCPS; Abdullah Abu Sayeed, MD; Mohammed Habibur Rahman, MBBS, FCPS; Anupam Barua, MBBS, MD, FCPS; Md Jasim Uddin, FCPS, MD; Md Abdus Sattar, MBBS, FCPS; Arjen M. Dondorp, MD, PhD; Stuart D. Blacksell, BAppSc, MPH, PhD; Nicholas P.J. Day, DM; Aniruddha Ghose, MD, FCPS, MBBS; Amir Hossain, FCPS, MD; and Daniel H. Paris, MD, PhD, have disclosed no relevant financial relationships.

Author affiliations: Charles Darwin University, Casuarina, Northern Territory, Australia (H.W. Kingston); Mahidol University, Bangkok, Thailand (H.W. Kingston, S. Leopold, T. Anantatat, A. Tanganuchitchamchai, I. Sinha, K. Plewes, R.J. Maude, A.M. Dondorp, S.D. Blacksell, N.P.J. Day, D.H. Paris); Chittagong Medical College Hospital, Chittagong, Bangladesh (M. Hossain, M.A.H. Chowdhury, S. Paul, R.A.M.E. Uddin, M.A.N. Siddiqui, A.S. Zahed, A.A. Sayeed, M.H. Rahman, A. Barua, M.J. Uddin, M.A. Sattar, A. Ghose, A. Hossain); Oxford University, Oxfordshire, UK (I. Sinha, R.J. Maude, A.M. Dondorp, S.D. Blacksell, N.P.J. Day, D.H. Paris); Harvard University, Boston, Massachusetts, USA (R.J. Maude); Swiss Tropical and Public Health Institute, Basel, Switzerland (D.H. Paris); University of Basel, Basel (D.H. Paris)

DOI: <https://doi.org/10.3201/eid2404.170190>

We conducted a yearlong prospective study of febrile patients admitted to a tertiary referral hospital in Chittagong, Bangladesh, to assess the proportion of patients with rickettsial illnesses and identify the causative pathogens, strain genotypes, and associated seasonality patterns. We diagnosed scrub typhus in 16.8% (70/416) and murine typhus in 5.8% (24/416) of patients; 2 patients had infections attributable to undifferentiated *Rickettsia* spp. and 2 had DNA sequence-confirmed *R. felis* infection. *Orientia tsutsugamushi* genotypes included Karp, Gilliam, Kato, and TA763-like strains, with a prominence of Karp-like strains. Scrub typhus admissions peaked in a biphasic pattern before and after the rainy season, whereas murine typhus more frequently occurred before the rainy season. Death occurred in 4% (18/416) of cases; case-fatality rates were 4% each for scrub typhus (3/70) and murine typhus (1/28). Overall, 23.1% (96/416) of patients had evidence of treatable rickettsial illnesses, providing important evidence toward optimizing empirical treatment strategies.

The prevalence, seasonality, and genotypes of tropical rickettsial illnesses in Bangladesh remain unknown. Scrub and murine typhus typically present as undifferentiated febrile illnesses and are insensitive to penicillins and cephalosporins, common antimicrobial drugs used empirically (1). Rickettsial illnesses are increasingly recognized as important causes of fever in adjacent countries in the region, including Thailand, Laos, and India (2–5). Therefore, determining whether rickettsial infections are widespread in Bangladesh, a low-income country with a population of ≈160 million, is of urgent public health interest.

Cross-sectional seroprevalence studies suggest that exposure to scrub typhus and murine typhus is common (6). In addition, given the substantial proportion of febrile patients from north-central Bangladesh with confirmed *R. felis* infection (7), further investigations regarding the clinical relevance of this pathogen are warranted.

Identification and characterization of circulating pathogens and strains is crucial for the development of

diagnostics and vaccines (8). Strong seasonal trends might guide differential diagnostic considerations. Therefore, we conducted a year-long prospective study of febrile patients admitted to a tertiary referral hospital with a wide catchment area in southeast Bangladesh, aiming to assess the proportion of patients with rickettsial illnesses, identify the causative pathogens, strain genotypes, and the associated seasonality patterns.

Materials and Methods

We conducted our study at Chittagong Medical College Hospital (CMCH), Chittagong, Bangladesh, during August 2014–September 2015. We enrolled into the study all consenting patients ≥12 years old who were admitted with a febrile illness to the medical wards and referred to the hospital's malaria screening service with a history of fever for <3 weeks. Written informed consent was provided by all patients before inclusion in the study or by their relatives if the patient lacked capacity for providing consent. The study was approved by Chittagong Medical College ethics committee in Bangladesh and the Oxford Tropical Research Ethics Committee, United Kingdom.

We collected admission blood samples and convalescent-phase blood samples (taken 7–14 days apart, where possible) into EDTA tubes and separated the samples into packed cells and plasma before storage at -30°C. We subjected packed cell admission samples of all patients to DNA extraction for real-time PCR screening by using the 47-kDa *htra* gene-based assay for *Orientia* spp. and the 17-kDa gene-based assay for *Rickettsia* spp. We subsequently confirmed positive results by nested PCR (nPCR) assays with product sequencing. For *Orientia* spp., we targeted the 56-kDa and 47-kDa gene targets. For *Rickettsia* spp., we targeted 17-kDa and performed *ompB* real-time PCR and *gltA* nPCR, as previously described (9,10).

We aligned the resulting DNA sequences for construction of phylogenetic trees by using CLC Sequence Viewer 7.0.2 (<http://www.clcbio.com>). For serologic testing, all patient plasma samples underwent indirect immunofluorescence assays (IFA) by using slides from the Australian Rickettsial Reference Laboratory coated with *O. tsutsugamushi* (strains Karp, Kato, and Gilliam) for scrub typhus or *R. typhi* (Wilmington strain) for murine typhus. We used the following stringent diagnostic positivity criteria for scrub and murine typhus: a baseline IgM titer of ≥3,200 or a 4-fold rise to ≥3,200. In the absence of regional serologic positivity criteria for Bangladesh, we selected these cutoffs on the basis of experience from an area where scrub typhus is highly endemic (11). In suspected cases of *R. felis* infection, we conducted IFA by using dedicated IFA slides from the Australian Rickettsial Reference Laboratory. We conducted statistical analyses by using Stata 14 (StataCorp LLC, College Station, TX, USA).

Results

We screened 901 patients for enrollment; 794 patients met the enrollment criteria and, of these, 416 gave consent and were enrolled into the study. A total of 414 patient admission samples were available for PCR and 415 for serologic testing; 256/416 (62%) patients were followed up to provide paired samples. Of the enrolled patients, 16.8% (70/416) had a robust diagnosis of scrub typhus and 5.8% (24/416) of murine typhus by PCR, serologic testing, or both (Table). Two patients had evidence of both typhus group and scrub typhus infection, and 2 patients were found to have undifferentiated *Rickettsia* spp. infections. Samples from 2 patients were positive for *R. felis* (1 patient's blood was positive for *R. felis* by 17kDa nPCR and sequencing; the second patient was positive for *O. tsutsugamushi* by 47kDa and 56kDa nPCR and 56kDa gene sequencing from blood and eschar, but also had a superficial eschar swab positive for *R. felis* by 17kDa nPCR and sequencing, suggestive of scrub typhus infection with possible skin carriage of *R. felis* on the skin or eschar). Both of these patients with PCR evidence of *R. felis* infection were serologically negative (titer <1:10) by *R. felis*-specific IFA. In this prospective

cohort of hospitalized febrile patients, 23.1% (96/416) of the fevers were attributable to rickettsial illnesses.

We plotted the geographic distribution of scrub typhus and murine typhus cases (Figure 1), reflecting the catchment area of the hospital in southeast Bangladesh. The case-patient with blood PCR positivity for *R. felis* was from urban Chittagong, whereas the case-patient with eschar swab positivity for *R. felis* and blood positivity for *O. tsutsugamushi* came from a rural area. Only 12% (8/67) of patients with scrub typhus came from urban areas, compared with 27% (84/310) of those without evidence of rickettsia ($p = 0.009$).

We observed 2 peaks of scrub typhus patient admissions during the study period, 1 in the cooler months of November and December, when 32/72 (44%) patients were found to be positive for scrub typhus, and the other before the rainy season in April and May, with 6/34 (18%) of cases. Murine typhus cases peaked in the months before the rainy season (Figure 2).

Among all patients with rickettsial illnesses, the most common complaints were headache, anorexia, and myalgia, whereas rash was only detected in 6/96 (6%) of patients. In

Table. Results of PCR and serologic tests for rickettsial illness among 416 patients, Chittagong Medical College Hospital, Chittagong, Bangladesh, August 2014–September 2015*

Organism and test type	No. positive/no. tested (%)
<i>Orientia tsutsugamushi</i>	70/416 (16.8)
Blood PCR, rPCR 47-kDa positive	45/414 (10.9)
nPCR 47 kDa positive	45/45 (100)
nPCR 56 kDa positive	45/45 (100)
Eschar swab, rPCR 47 kDa and n56kDa positive; crust (n = 1), swab (n = 3)	3/416 (0.7)
Indirect immunofluorescence assay	57/415 (13.7)
Admission titer $\geq 3,200$	54/415 (13.0)
4-fold rise to $\geq 3,200$	31/255 (12.1)
PCR+ and serology+, 32/70 (45.7% of ST positives)	32/413 (7.7)
PCR+ and serology-, 13/70 (18.6% ST positives)	13/413 (3.1)
PCR- and serology+, 25/70 (35.7% of ST positives)	25/413 (6.0)
<i>Rickettsia</i> spp.	29/416 (7.0)
Blood PCR, rPCR 17 kDa positive	23/414 (5.6)
nPCR 17 kDa positive	16/23 (69.6)
<i>Rickettsia typhi</i> , 24/29 (83.0%) of <i>Rickettsia</i> spp.	24/416 (5.8)
Blood PCR	17/414 (4.1)
rPCR <i>OmpB</i> positive	12/414 (2.9)
nPCR 17-kDa sequencing	15/16 (93.8)
Indirect immunofluorescence assay	15/415 (3.6)
Admission titer $\geq 3,200$	11/415 (2.7)
4-fold rise to $\geq 3,200$	5/255 (2.0)
PCR+ and serology+, 8/24 (33.3% of MT positives)	8/413 (1.9)
PCR+ and serology-, 9/24 (37.5% of MT positives)	9/413 (2.2)
PCR- and serology+, 7/24 (29.1% of MT positives)	7/413 (1.7)
Undifferentiated <i>Rickettsia</i> spp., 3/29 (10.3% of <i>Rickettsia</i> spp.)	3/416 (0.7)
rPCR 17-kDa positive, <i>ompB</i> negative	3/416 (0.7)
nPCR 17-kDa negative, <i>gltA</i> negative	3/416 (0.7)
MT serology negative	3/416 (0.7)
<i>Rickettsia felis</i>	2/416 (0.5)
Blood PCR, 17-kDa rPCR and nPCR	1/416 (0.2)
Eschar swab, 17-kDa rPCR and nPCR	1/416 (0.2)
All rickettsial illnesses†	96/416 (23.1)

*MT, murine typhus; nPCR, nested PCR; rPCR, real-time PCR; ST, scrub typhus.

†Twenty-nine patients had evidence of *Rickettsia* spp. infection; 70 had evidence of *O. tsutsugamushi* infection. Because 2 case-patients had mixed blood *O. tsutsugamushi* and *Rickettsia* spp. infections and 1 case-patient with *O. tsutsugamushi* infection in addition to an eschar-positive swab for *R. felis*, the total number of rickettsial illness cases was 96.

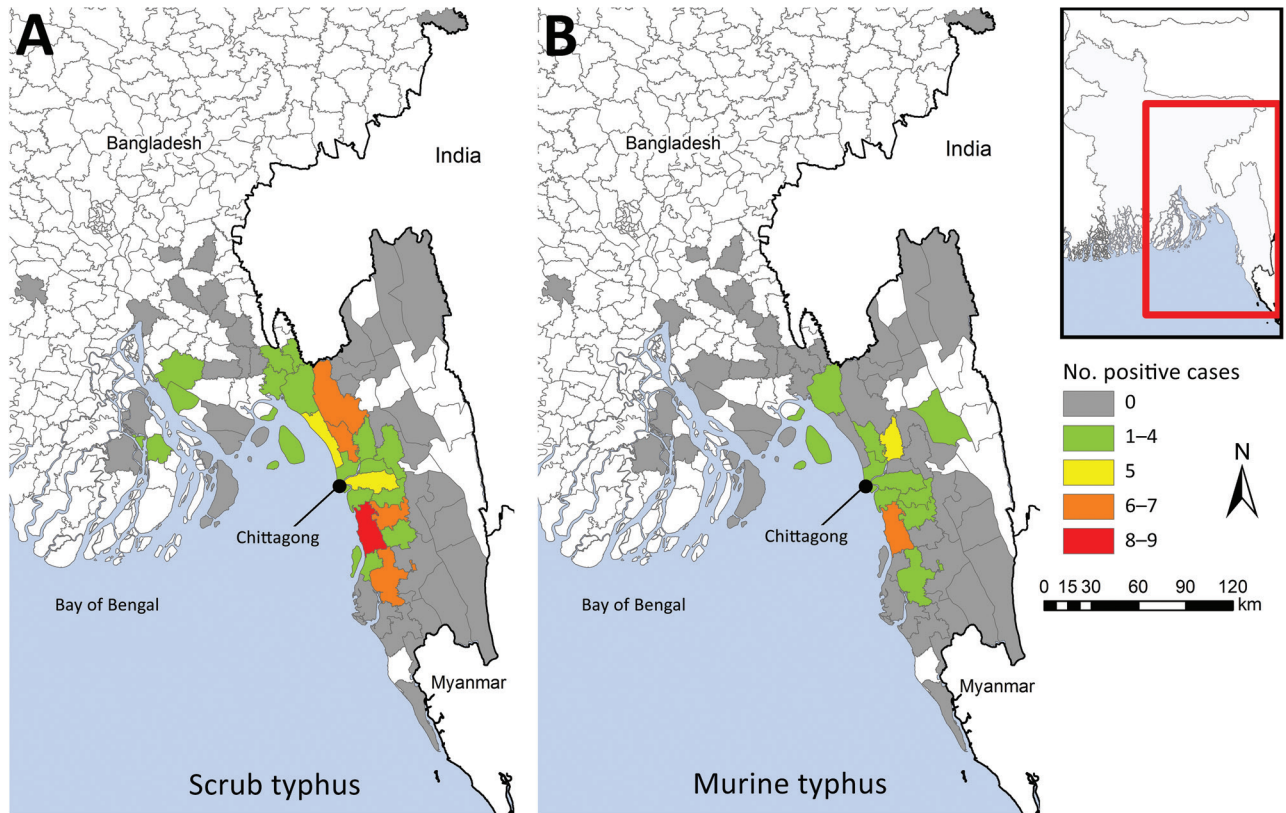


Figure 1. Geographic distribution of scrub typhus (A) and murine typhus (B) cases, Chittagong, Bangladesh, August 2014–September 2015. Inset shows location of enlarged area (red box).

scrub typhus cases, an eschar was found in only 3/70 (4%) of patients, despite training and use of a dedicated checklist for identifying eschars included in the clinical record form. The blood PCR–positive *R. felis* case (SW148) had a different manifestation than other rickettsioses: an itchy vesicular–petechial rash similar to spotted fever group rickettsioses that started periorally and distributed to the trunk and extremities. The patient reported contact with rats in the 3 weeks before illness onset. Overall, 4 deaths were attributable to typhus during this study (3/70 [4.3%] of the patients with scrub typhus and 1/28 [3.6%] patient in the murine typhus group). Of the rickettsia-negative case-patients, 14/320 (4.4%) died. All 3 of the patients with scrub typhus who died had clinical evidence of meningoencephalitis. At study enrollment, the first patient had a Glasgow Coma Scale of 7, severe respiratory distress, new atrial fibrillation with a rapid ventricular response, and hypotension with cold peripheries, consistent with septic shock. The second patient had impaired consciousness, meningism, dyspnea, chest pain, and cough. The third patient had a Glasgow Coma Scale of 12, with convulsions and a cough with severe respiratory distress. The patient with murine typhus who died had severe diarrhea, progressive impairment of consciousness, and renal failure.

Most 56-kDa gene sequences (cropped to ≈ 450 bp length) clustered with Karp and Karp-like sequences, previously described from Thailand (12), but we also observed a cluster of Gilliam-like strains. One sequence (SW275) grouped closely with the Thai animal TA763 strain and another (SW228) with the Kato reference strain (Figure 3). We found no evidence of substantial divergence from known *O. tsutsugamushi* strains or potential new *Orientia* species, and *Orientia chuto* sp. nov. from Dubai remains highly distinct in the 47-kDa gene sequence phylogenetic tree (online Technical Appendix Figure, <https://wwwnc.cdc.gov/EID/article/24/4/17-0190-Techapp1.pdf>) (13,14). Pairwise gene–gene sequence similarity values between *O. tsutsugamushi* samples from Bangladesh and reference strains (partial 56-kDa gene sequences) showed that the largest proportion of 56-kDa gene sequences were similar to the Karp reference strain or the Thai Karp-like strain UT76, followed by Gilliam (online Technical Appendix Table).

Most 17-kDa sequences (cropped to 314 bp) obtained from patient blood showed highest homologies to the *R. typhi* Wilmington strain, the TH1527 Thai strain from Chiangrai, and recently described strains from Laos and Yucatan, Mexico (GenBank accession nos. AE017197, CP003398,

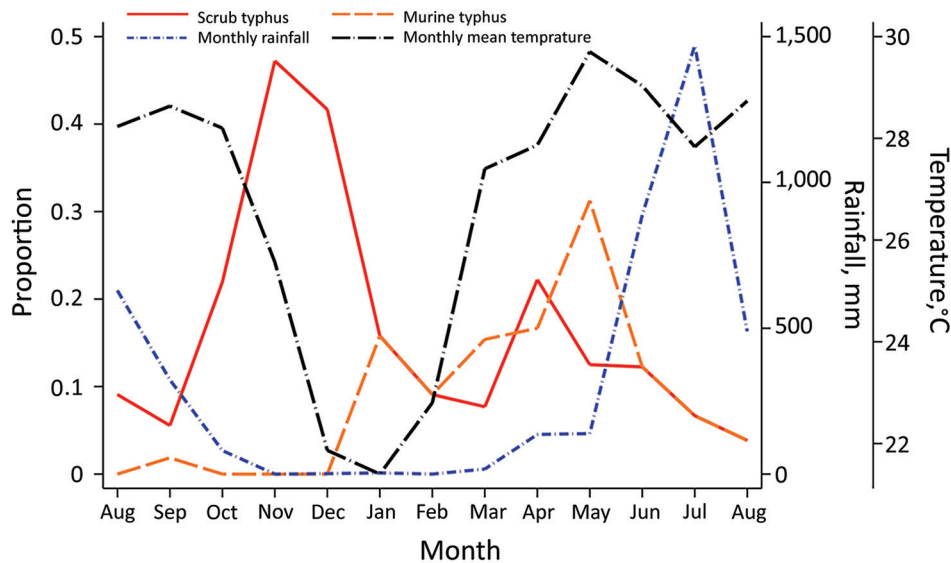


Figure 2. Seasonality of scrub typhus and murine typhus–related hospital admissions, Chittagong Medical College Hospital, Chittagong, Bangladesh, August 2014–September 2015. We observed a biphasic pattern in scrub typhus, with an increase of cases in the cooler months and a smaller peak before the rainy season.

KC283066, and JX198507, respectively). Two 17-kDa sequences from SW148 (blood) and SW211ES (eschar swab) showed 100% homologies with the previously sequenced *R. felis* strain URRWXC2 and a recent isolate from cat fleas on opossums in Yucatan (GenBank accession numbers CP000053 and KR709306, respectively).

Discussion

Rickettsial illnesses are common causes of fever in hospitalized patients in southeastern Bangladesh. In total, 23% of all undifferentiated febrile case-patients recruited prospectively over a full calendar year were attributable to rickettsial illnesses, predominantly scrub typhus (16.8%) and murine typhus (5.8%). These febrile patients had disease severity that justified hospitalization and an overall mortality rate of 4.3% (18/417). The case-fatality rate for rickettsial illness was high (4% overall) and similar for each group (4.3% [3/70] for scrub typhus, 3.6% [1/28] for murine typhus, and 4.4% [14/320] for non-rickettsial fever).

The nonspecificity of clinical symptoms and lack of readily available accurate diagnostic tools continue to contribute to suboptimal recognition of these common infections. Less than half of the patients with scrub or murine typhus had evidence of positivity in both the PCR and serologic assays, confirming the importance of using both diagnostic modalities. In this study, nearly one quarter of hospitalized, febrile patients had easily treatable typhus cases, justifying consideration of the inclusion of doxycycline as part of the empirical treatment for febrile patients in this region; doxycycline is well-tolerated, inexpensive, and readily available in this setting. This study did not specifically target severe disease or vulnerable populations, but if extrapolation of data from recent reports in neighboring

countries is valid, a high mortality rate associated with these groups can be assumed for both scrub and murine typhus. Further investigations in the region are urgently needed (15,16).

We observed a strong seasonal pattern in incidence, with an increase in scrub typhus cases before and at the end of the rainy season and a decrease in cases in the middle of the dry season, when the temperature fell (Figure 2). Nearly two thirds (64% [45/70]) of all scrub typhus cases occurred during October–December and in April, representing relevant periods of which clinicians should be aware. This biphasic pattern could be associated with reduced exposure by humans because of seasonal variation in their activities, a lower number of infected mites emerging from dry soil, or the transience of immune protection previously observed during multiple reexposures (17). The low frequency of eschars observed in scrub typhus patients in this study (4%), coupled with the high seroprevalence observed in the same region, probably reflects the presence of partial immune protection, which suggests continuous exposure in this population (6,17,18). Murine typhus cases peaked in the second half of the dry season, consistent with previously reported seasonality (19).

Despite multiple reports of serologic evidence for rickettsial illnesses in Bangladesh, no genotyping or molecular characterization of *Orientia* spp. and *Rickettsia* spp. has been performed to date. This step is an essential prerequisite to the development of rapid diagnostic tests and vaccines in disease-endemic areas. During World War II, the failed attempt to produce a scrub typhus vaccine in cotton rat lungs (termed Operation Tyburn) highlighted the importance of correctly identifying the circulating strains causing human disease. That vaccine, based on a clinically relevant strain identified in troops in the Burma Campaign

at Imphal, failed to protect troops when tested in Malaya, where different *Orientia* strains are present, and showed no evidence for cross-protection when tested during a large outbreak of scrub typhus (20–22).

A large, multicenter, high-quality *Orientia* genotyping effort in India recently reported a predominance of Kato-

like strains in the south but a high proportion of Karp-like strains in the north (2). In our study, we found a spectrum of diverse *Orientia* strains, most of which were Karp-like strains, with Gilliam strains being common, and few samples representing TA763 and Kato-related *O. tsutsugamushi* strains (Figure 3). The dominance of Karp-like strains

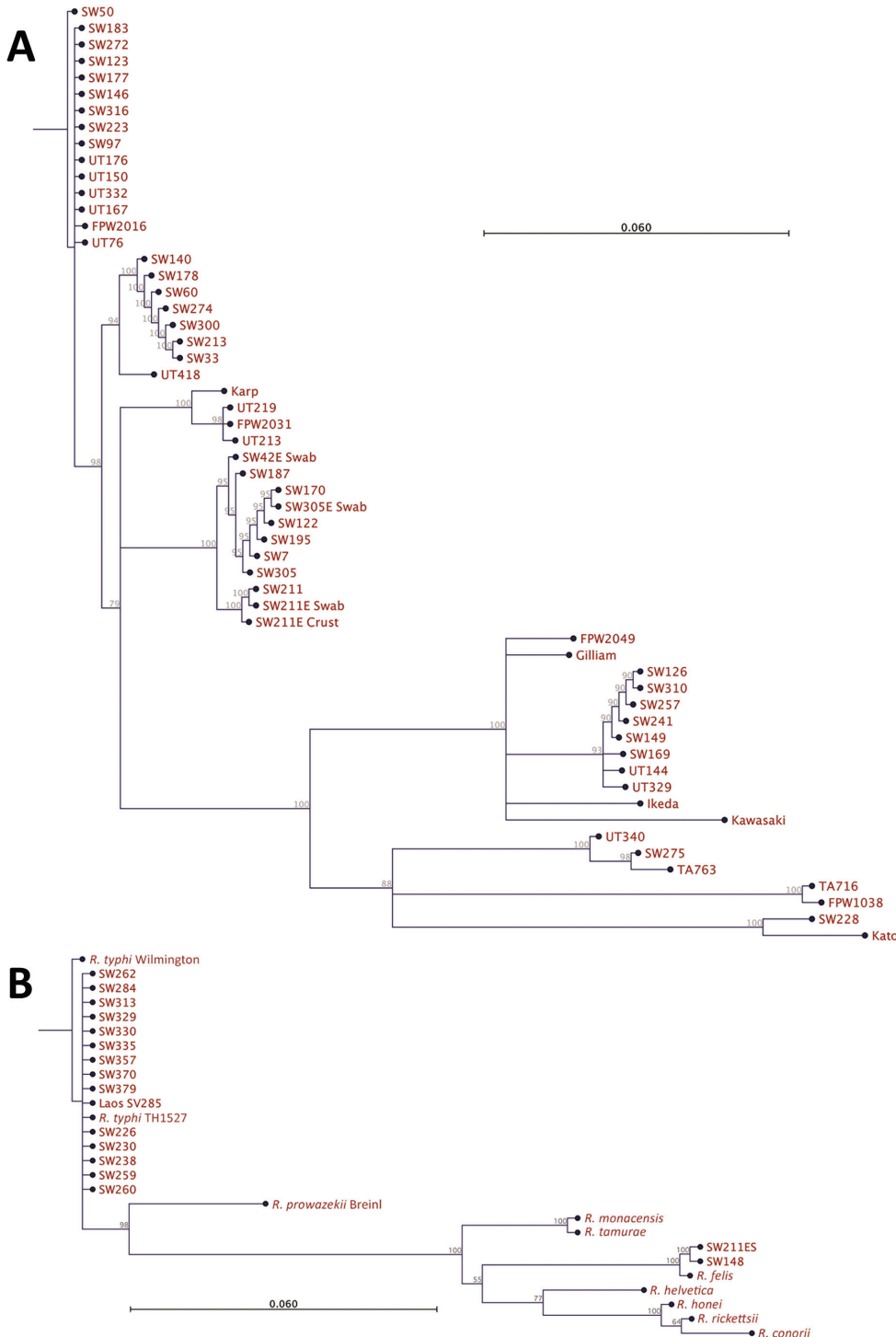


Figure 3. Phylogenetic analysis of pathogens contributing to rickettsial illnesses, Chittagong Medical College Hospital, Chittagong, Bangladesh, August 2014–September 2015. A) Phylogenetic dendrogram based on the nucleotide sequence of the partial open reading frame of the 56-kDa TSA gene (aligned and cropped to ~450 bp), depicting *Orientia tsutsugamushi* strains in relationship with reference and other strains. *O. tsutsugamushi* genotypes in Bangladesh included Karp, Gilliam, Kato, and TA763 strains, with a predominance of Karp-like strains. B) *Rickettsia* spp. as characterized by 17-kDa gene sequencing (aligned and cropped to 314 bp). The predominant pathogen identified was *R. typhi*. Of note, 2 *R. felis* infection cases were identified, including 1 systemic bloodstream infection and 1 scrub typhus case with eschar swab positivity in patient no. SW211ES (online Technical Appendix Table, <https://wwwnc.cdc.gov/EID/article/24/4/17-0190-Techapp1.pdf>), whose blood specimen was negative for *R. felis*, suggesting possible skin colonization of *R. felis*. Scale bar indicates nucleotide substitutions per site; branches shorter than 0.002 are shown as having a length of 0.002.

along with frequent Gilliam strains matches well with genotypic findings from nearby populations in northeast India, Myanmar, and Thailand (2,3,12). These findings should inform the development of improved and more accurate rapid diagnostic tests, especially those using antigen-based assays (23). We saw no evidence for new or highly divergent strains on the basis of homologies of the more conserved 47kDa *htra* gene sequences, and *O. chuto* sp. nov. remains a distinct outlier (14; online Technical Appendix Figure).

This study also identified a large number of murine typhus cases, and the 17-kDa gene-derived *Rickettsia typhi* DNA sequences were remarkably similar to the Wilmington reference strain, the first human Thai isolate from 1965 in Chiangrai, Thailand (TH1527), and a recent case from Laos (SV285) (24). Despite the worldwide coastal distribution of murine typhus, as commonly described in various textbooks, little is known about the molecular epidemiology of this potentially severe disease.

The enigmatic role of *R. felis* in human disease is being unraveled, with emerging evidence indicating both pathogenic and opportunistic roles (25,26). The atypical symptoms of primary infection attributable to *R. felis*, the potential of mosquitoes as transmission vectors, and *R. felis* as a skin contaminant on healthy persons are intriguing recent findings (27,28). In our study, the blood-borne *R. felis* (SW148) was associated with an unusual papulo-vesicular skin rash. This finding is consistent with yaaf, a previously described vesicular fever representing primo-infection (27). A second case (SW211) in a patient with robust evidence of scrub typhus showed the presence of *R. felis* DNA in the superficial eschar swab only, possibly extending previous findings of *R. felis* as a skin contaminant in Africa to the continent of Asia (29). The recent evidence for *R. felis* playing a possible role in human disease and skin colonization in Laos and Bangladesh, along with widespread seroprevalence observed in cats and fleas, provide sufficient evidence to pursue investigations into the transmission of this pathogen and its maintenance in nature (7,9,28,30).

Limitations of this study include the fact that patients were enrolled from 1 hospital only, limiting the reports to the catchment area. However, this is a large single-study site, given that it is the main tertiary referral hospital for southern Bangladesh (Figure 1). A multicenter effort would provide a more representative range of genotypes across the country, as previously performed in India (2). In addition, being hospitalized, the patients in this study were more likely to have symptoms toward the more severe end of the clinical spectrum.

In summary, scrub and murine typhus are important infectious diseases contributing substantially to the burden of undifferentiated fever in Bangladesh. With a mortality rate of 4% each, these diseases clearly require more attention. Empiric treatment strategies should be adapted

to cover these treatable rickettsial illnesses, and awareness among medical staff should be promoted regarding the diagnostic difficulties and seasonality of acute febrile illnesses. Studies assessing the prevalence of rickettsial illnesses should use both PCR and serologic testing to avoid missing cases and should cover 1 full calendar year to identify and adjust for seasonality. Further studies focusing on more in-depth assessment of transmission, incidence, and potential impact of these illnesses in Bangladesh are needed to increase awareness, improve empiric treatment strategies, and inform public health interventions aiming to reduce exposure.

Acknowledgments

We are grateful to the patients for their participation in this study.

This study was funded by the Wellcome Trust, London, UK. Wellcome Trust had no role in study design; in the collection, analysis, and interpretation of data; in the writing of the report; or in the decision to submit the paper for publication.

About the Author

Dr. Kingston graduated from medical school in 2007 and was a PhD student when this study was performed. His clinical research interests include the pathophysiology and treatment of severe malaria and typhus in resource-limited settings.

References

1. Paris DH, Day NPJ. Tropical rickettsial infections. In: Farrar J, Hotez PJ, Junghans T, Kang G, Lalloo D, White NJ, editors. *Manson's tropical diseases*, 23 ed. Aalborg (Denmark): Elsevier Ltd.; 2013. p. 273–91. <https://doi.org/10.1016/B978-0-7020-5101-2.00023-6>
2. Varghese GM, Janardhanan J, Mahajan SK, Tariang D, Trowbridge P, Prakash JA, et al. Molecular epidemiology and genetic diversity of *Orientia tsutsugamushi* from patients with scrub typhus in 3 regions of India. *Emerg Infect Dis*. 2015;21:64–9. <http://dx.doi.org/10.3201/eid2101.140580>
3. Parola P, Miller RS, McDaniel P, Telford SR III, Rolain J-M, Wongsrichanalai C, et al. Emerging rickettsioses of the Thai–Myanmar border. *Emerg Infect Dis*. 2003;9:592–5. <http://dx.doi.org/10.3201/eid0905.020511>
4. Phongmany S, Rolain J-M, Phetsouvanh R, Blacksell SD, Soukhaseum V, Rasachack B, et al. Rickettsial infections and fever, Vientiane, Laos. *Emerg Infect Dis*. 2006;12:256–62. <http://dx.doi.org/10.3201/eid1202.050900>
5. Chheng K, Carter MJ, Emary K, Chanpheaktra N, Moore CE, Stoesser N, et al. A prospective study of the causes of febrile illness requiring hospitalization in children in Cambodia. *PLoS One*. 2013;8:e60634. <http://dx.doi.org/10.1371/journal.pone.0060634>
6. Maude RR, Maude RJ, Ghose A, Amin MR, Islam MB, Ali M, et al. Serosurveillance of *Orientia tsutsugamushi* and *Rickettsia typhi* in Bangladesh. *Am J Trop Med Hyg*. 2014;91:580–3. <http://dx.doi.org/10.4269/ajtmh.13-0570>
7. Ferdouse F, Hossain MA, Paul SK, Ahmed S, Mahmud MC, Ahmed R, et al. *Rickettsia felis* infection among humans, Bangladesh, 2012–2013. *Emerg Infect Dis*. 2015;21:1483–5. <http://dx.doi.org/10.3201/eid2108.150328>

8. Paris DH, Shelite TR, Day NP, Walker DH. Unresolved problems related to scrub typhus: a seriously neglected life-threatening disease. *Am J Trop Med Hyg.* 2013;89:301–7. <http://dx.doi.org/10.4269/ajtmh.13-0064>
9. Dittrich S, Phommason K, Anantatat T, Panyanivong P, Slesak G, Blacksell SD, et al. *Rickettsia felis* infections and comorbid conditions, Laos, 2003–2011. *Emerg Infect Dis.* 2014;20:1402–4. <http://dx.doi.org/10.3201/eid2008.131308>
10. Mayxay M, Castonguay-Vanier J, Chansamouth V, Dubot-Pères A, Paris DH, Phetsouvanh R, et al. Causes of non-malarial fever in Laos: a prospective study. *Lancet Glob Health.* 2013;1:e46–54. [http://dx.doi.org/10.1016/S2214-109X\(13\)70008-1](http://dx.doi.org/10.1016/S2214-109X(13)70008-1)
11. Lim C, Blacksell SD, Laongnualpanich A, Kantipong P, Day NPJ, Paris DH, et al. Optimal cutoff titers for indirect immunofluorescence assay for diagnosis of scrub typhus. *J Clin Microbiol.* 2015;53:3663–6. <http://dx.doi.org/10.1128/JCM.01680-15>
12. Blacksell SD, Luksameetanasan R, Kalambaheti T, Aukkanit N, Paris DH, McGready R, et al. Genetic typing of the 56-kDa type-specific antigen gene of contemporary *Orientia tsutsugamushi* isolates causing human scrub typhus at two sites in north-eastern and western Thailand. *FEMS Immunol Med Microbiol.* 2008;52:335–42. <http://dx.doi.org/10.1111/j.1574-695X.2007.00375.x>
13. Jiang J, Paris DH, Blacksell SD, Aukkanit N, Newton PN, Phetsouvanh R, et al. Diversity of the 47-kD HtrA nucleic acid and translated amino acid sequences from 17 recent human isolates of *Orientia*. *Vector Borne Zoonotic Dis.* 2013;13:367–75. <http://dx.doi.org/10.1089/vbz.2012.1112>
14. Izzard L, Fuller A, Blacksell SD, Paris DH, Richards AL, Aukkanit N, et al. Isolation of a novel *Orientia* species (*O. chuto* sp. nov.) from a patient infected in Dubai. *J Clin Microbiol.* 2010;48:4404–9. <http://dx.doi.org/10.1128/JCM.01526-10>
15. McGready R, Prakash JAJ, Benjamin SJ, Watthanaworawit W, Anantatat T, Tanganuchitcharnchai A, et al. Pregnancy outcome in relation to treatment of murine typhus and scrub typhus infection: a fever cohort and a case series analysis. *PLoS Negl Trop Dis.* 2014;8:e3327. <http://dx.doi.org/10.1371/journal.pntd.0003327>
16. Dittrich S, Rattanavong S, Lee SJ, Panyanivong P, Craig SB, Tulsiani SM, et al. *Orientia*, *Rickettsia*, and *Leptospira* pathogens as causes of CNS infections in Laos: a prospective study. *Lancet Glob Health.* 2015;3:e104–12. [http://dx.doi.org/10.1016/S2214-109X\(14\)70289-X](http://dx.doi.org/10.1016/S2214-109X(14)70289-X)
17. Smadel JE, Ley HL Jr, Diercks FH, Paterson PY, Wisseman CL Jr, Traub R. Immunization against scrub typhus: duration of immunity in volunteers following combined living vaccine and chemoprophylaxis. *Am J Trop Med Hyg.* 1952;1:87–99. <http://dx.doi.org/10.4269/ajtmh.1952.1.87>
18. Paris DH, Chattopadhyay S, Jiang J, Nawtaisong P, Lee JS, Tan E, et al. A nonhuman primate scrub typhus model: protective immune responses induced by pKarp47 DNA vaccination in cynomolgus macaques. *J Immunol.* 2015;194:1702–16. <http://dx.doi.org/10.4049/jimmunol.1402244>
19. Civen R, Ngo V. Murine typhus: an unrecognized suburban vectorborne disease. *Clin Infect Dis.* 2008;46:913–8. <http://dx.doi.org/10.1086/527443>
20. Audy JR, Savoore SR. Typhus. In: Field JW, Green R, Byron FE, editors. *The Institute for Medical Research 1900–1950, Jubilee Volume No. 25.* Kuala Lumpur (Malaysia): Government Press; 1951.
21. Zarafonitis C, Baker M. Scrub typhus. In: Coates JB Jr, Havens WP Jr, eds. *Internal medicine in World War II, volume 2: infectious diseases.* Washington: Typhus Office of the Surgeon General, Department of the Army; 1963.
22. Kellaway CH. The Wellcome Research Institution. *Proc R Soc Lond A Math Phys Sci.* 1948;193:435–47. <http://dx.doi.org/10.1098/rspa.1948.0055>
23. Kingston HW, Blacksell SD, Tanganuchitcharnchai A, Laongnualpanich A, Basnyat B, Day NP, et al. Comparative accuracy of the InBios Scrub Typhus Detect IgM Rapid Test for the detection of IgM antibodies by using conventional serology. *Clin Vaccine Immunol.* 2015;22:1130–2. <http://dx.doi.org/10.1128/CVI.00390-15>
24. Phommason K, Paris DH, Anantatat T, Castonguay-Vanier J, Keomany S, Souvannasing P, et al. Concurrent infection with murine typhus and scrub typhus in southern Laos—the mixed and the unmixed. *PLoS Negl Trop Dis.* 2013;7:e2163. <http://dx.doi.org/10.1371/journal.pntd.0002163>
25. Mediannikov O, Socolovschi C, Edouard S, Fenollar F, Mouffok N, Bassene H, et al. Common epidemiology of *Rickettsia felis* infection and malaria, Africa. *Emerg Infect Dis.* 2013;19:1775–83. <http://dx.doi.org/10.3201/eid1911.130361>
26. Angelakis E, Mediannikov O, Parola P, Raoult D. *Rickettsia felis*: the complex journey of an emergent human pathogen. *Trends Parasitol.* 2016;32:554–64. <http://dx.doi.org/10.1016/j.pt.2016.04.009>
27. Mediannikov O, Fenollar F, Bassene H, Tall A, Sokhna C, Trape JF, et al. Description of “yaaf”, the vesicular fever caused by acute *Rickettsia felis* infection in Senegal. *J Infect.* 2013;66:536–40. <http://dx.doi.org/10.1016/j.jinf.2012.10.005>
28. Slesak G, Inthalath S, Dittrich S, Paris DH, Newton PN. Leeches as further potential vectors for rickettsial infections. *Proc Natl Acad Sci U S A.* 2015;112:E6593–4. <http://dx.doi.org/10.1073/pnas.1515229112>
29. Mediannikov O, Socolovschi C, Million M, Sokhna C, Bassene H, Diatta G, et al. Molecular identification of pathogenic bacteria in eschars from acute febrile patients, Senegal. *Am J Trop Med Hyg.* 2014;91:1015–9. <http://dx.doi.org/10.4269/ajtmh.13-0629>
30. Ahmed R, Paul SK, Hossain MA, Ahmed S, Mahmud MC, Nasreen SA, et al. Molecular detection of *Rickettsia felis* in humans, cats, and cat fleas in Bangladesh, 2013–2014. *Vector Borne Zoonotic Dis.* 2016;16:356–8. <http://dx.doi.org/10.1089/vbz.2015.1886>

Address for correspondence: Daniel H. Paris, Swiss Tropical and Public Health Institute, Socinstrasse 57, 4051, Basel, Switzerland; email: daniel.paris@swisstph.ch