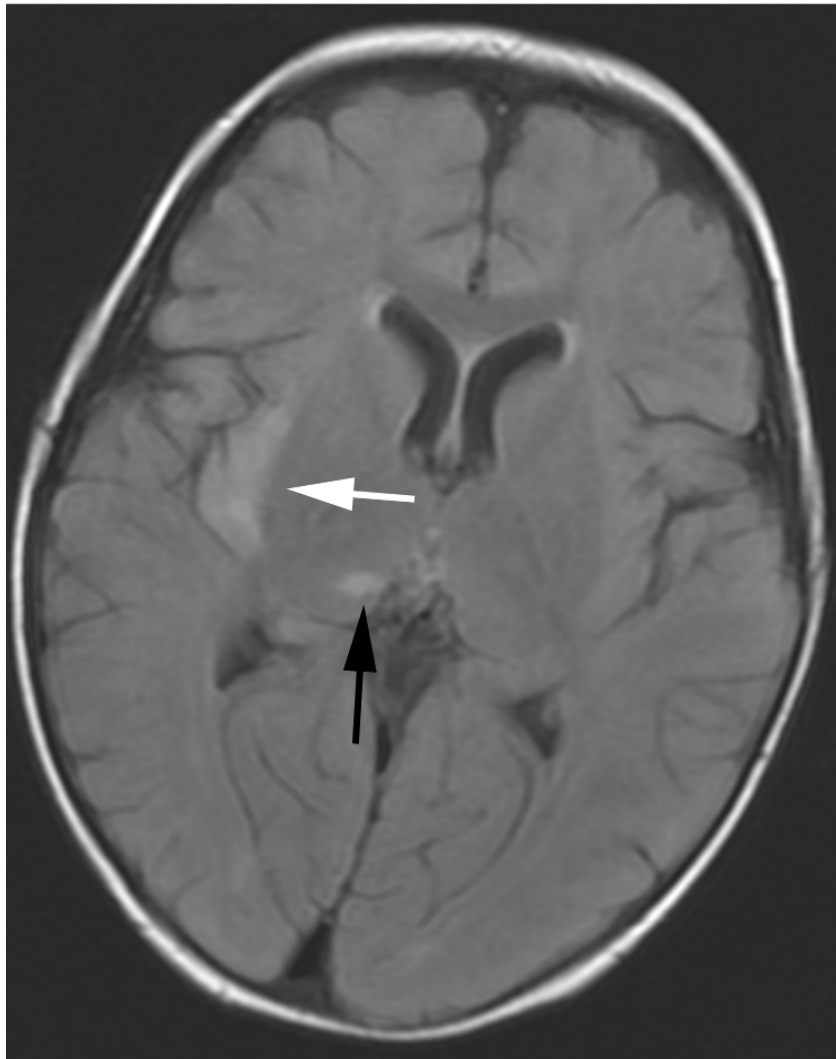
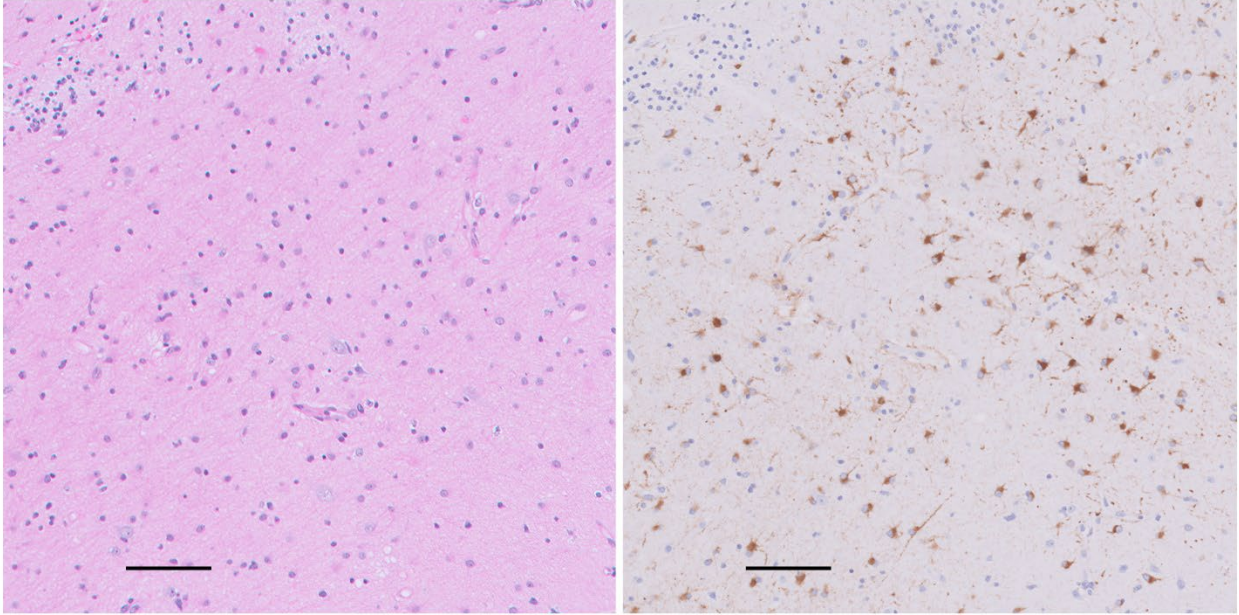


# Vaccine-Associated Measles Encephalitis in Immunocompromised Child, California, USA

## Appendix



**Appendix Figure 1.** Axial fluid-attenuated inversion recovery (FLAIR) image at the level of the thalamus showing multifocal hyperintensities in the right insular subcortical white matter and cortex (white arrow) and right thalamus (black arrow).



**Appendix Figure 2.** Hematoxylin and eosin-stained formalin-fixed stereotactic brain biopsy tissue from mesial temporal lobe deep gray matter, likely amygdala, showing mild hypercellularity in area of abnormal MRI signal (left). Glial fibrillary acidic protein immunohistochemical stain highlights mild astrogliosis in same deep gray matter (right). Bars represent 100  $\mu\text{m}$ .