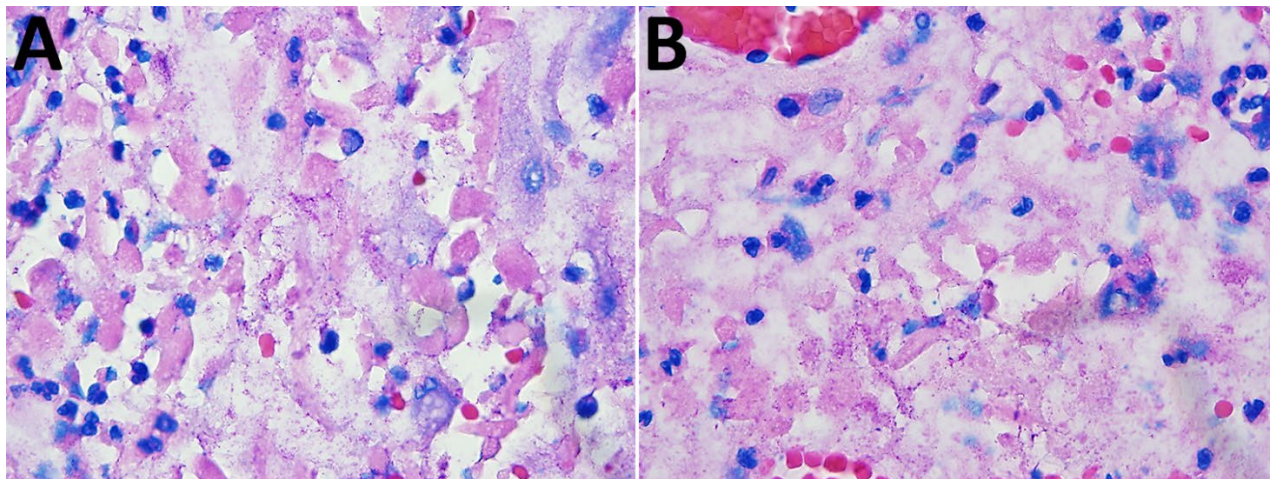


Article DOI: <https://doi.org/10.3201/eid3102.240870>

*EID cannot ensure accessibility for supplementary materials supplied by authors.  
Readers who have difficulty accessing supplementary content should contact the authors for assistance.*

# Infection by Tickborne Bacterium *Candidatus* Midichloria Associated with First Trimester Pregnancy Loss, Tennessee, USA

## Appendix



**Appendix Figure.** Giemsa special staining reveals darkly stained, small, intracellular rod-shaped structures within stromal fibroblasts and macrophages (A-B, 1000X under immersion oil).